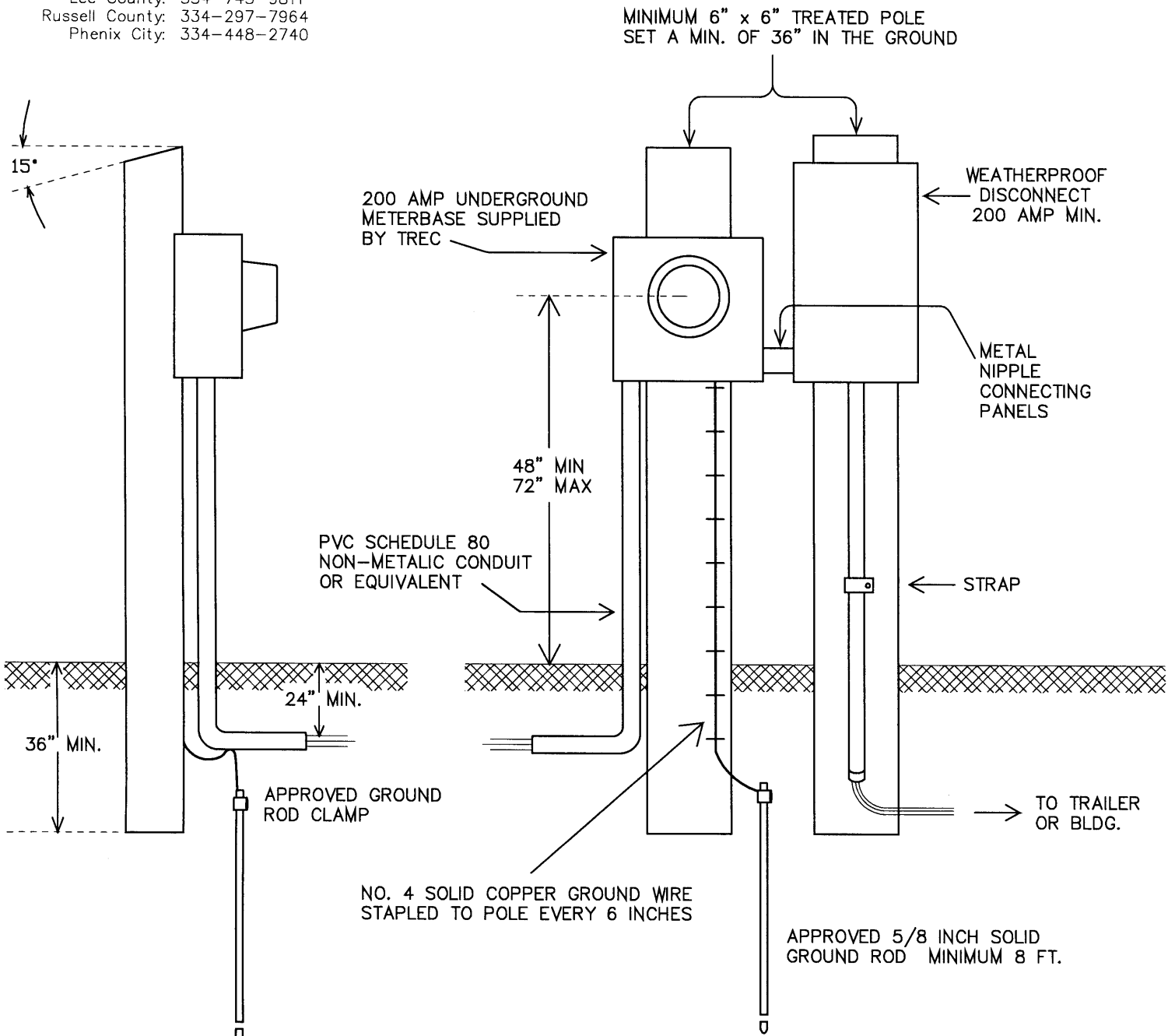


PERMANENT URD PEDESTAL SERVICE (TWO POLES)

THIS INSTALLATION MUST CONFORM TO THE NEC AND ANY APPLICABLE LOCAL CODES AND ORDINANCES. *SEE LOCAL AUTHORITIES FOR ANY REQUIREMENTS BEYOND THESE LISTED.

***LOCAL INSPECTORS:**

- Auburn City Limits: 334-501-3170
- Opelika City Limits: 334-705-5420
- Lee County: 334-745-9811
- Russell County: 334-297-7964
- Phenix City: 334-448-2740



This drawing shows one of many acceptable configurations for meterbase & disconnect configuration. Other alignments include: Meterbase above disconnect (offset for service riser conduit), Meterbase with disconnect on back side of pole, etc.

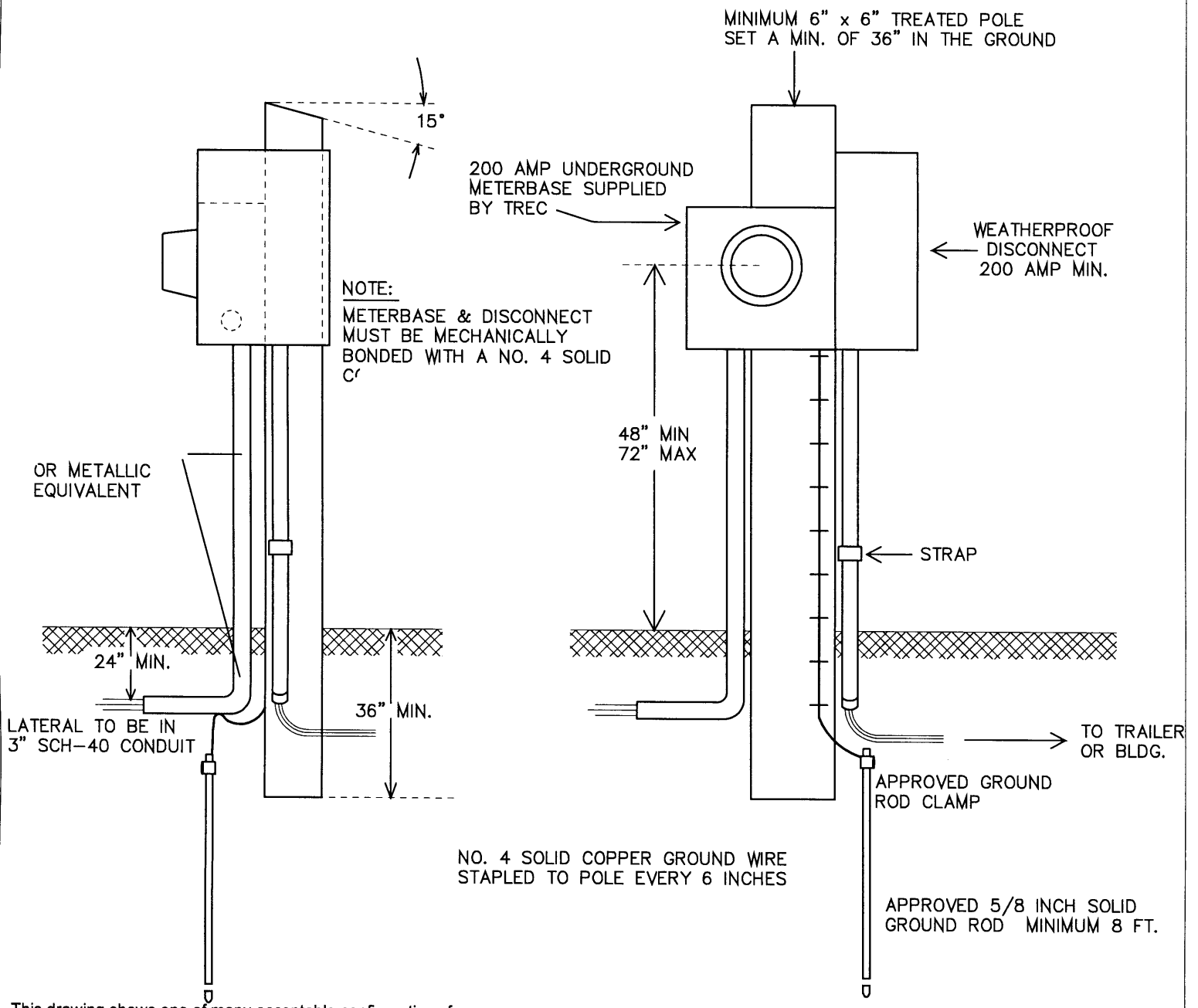
For all services 200 - 400 amp, 3" conduit must be used with approved meterbase.**
 ** Meterbase must accept 3" conduit nipple & must have meter lugs offset with extra space on one side to easily loop service entrance conductors around lugs to top side. Use of contractor-pack combo unit is discouraged. TREC reserve the right to refuse connection if entrance is not correct.

For all services 100 amp or less, risers and sweeps may only be reduced to 2.5" SCH-80, but meterbase must still be offset.

Member must always OPEN and CLOSE lateral ditch (min. 24" deep).

TALLAPOOSA RIVER ELECTRIC CO-OP, INC. LAFAYETTE, ALABAMA PHONE # 1-800-332-8732	
METER PEDESTAL 200 AMP UNDERGROUND	
DRAWN BY: KENNETH SMITH	DATE: 3 - 10 - 94
SCALE: NONE	SHEET 1 OF 2

THIS INSTALLATION MUST CONFORM TO THE NEC AND ANY APPLICABLE LOCAL CODES AND ORDINANCES. *SEE LOCAL AUTHORITIES FOR ANY REQUIREMENTS BEYOND THESE LISTED.



NOTE:
METERBASE & DISCONNECT
MUST BE MECHANICALLY
BONDED WITH A NO. 4 SOLID
C^r

This drawing shows one of many acceptable configurations for meterbase & disconnect configuration. Other alignments include:
Meterbase above disconnect (offset for service riser conduit),
Meterbase with disconnect on back side of pole, etc.

For all services 200 - 400 amp, 3" conduit must be used with approved meterbase.**

** Meterbase must accept 3" conduit nipple & must have meter lugs offset with extra space on one side to easily loop service entrance conductors around lugs to top side. Use of contractor-pack combo unit is discouraged. TREC reserve the right to refuse connection if entrance is not correct.

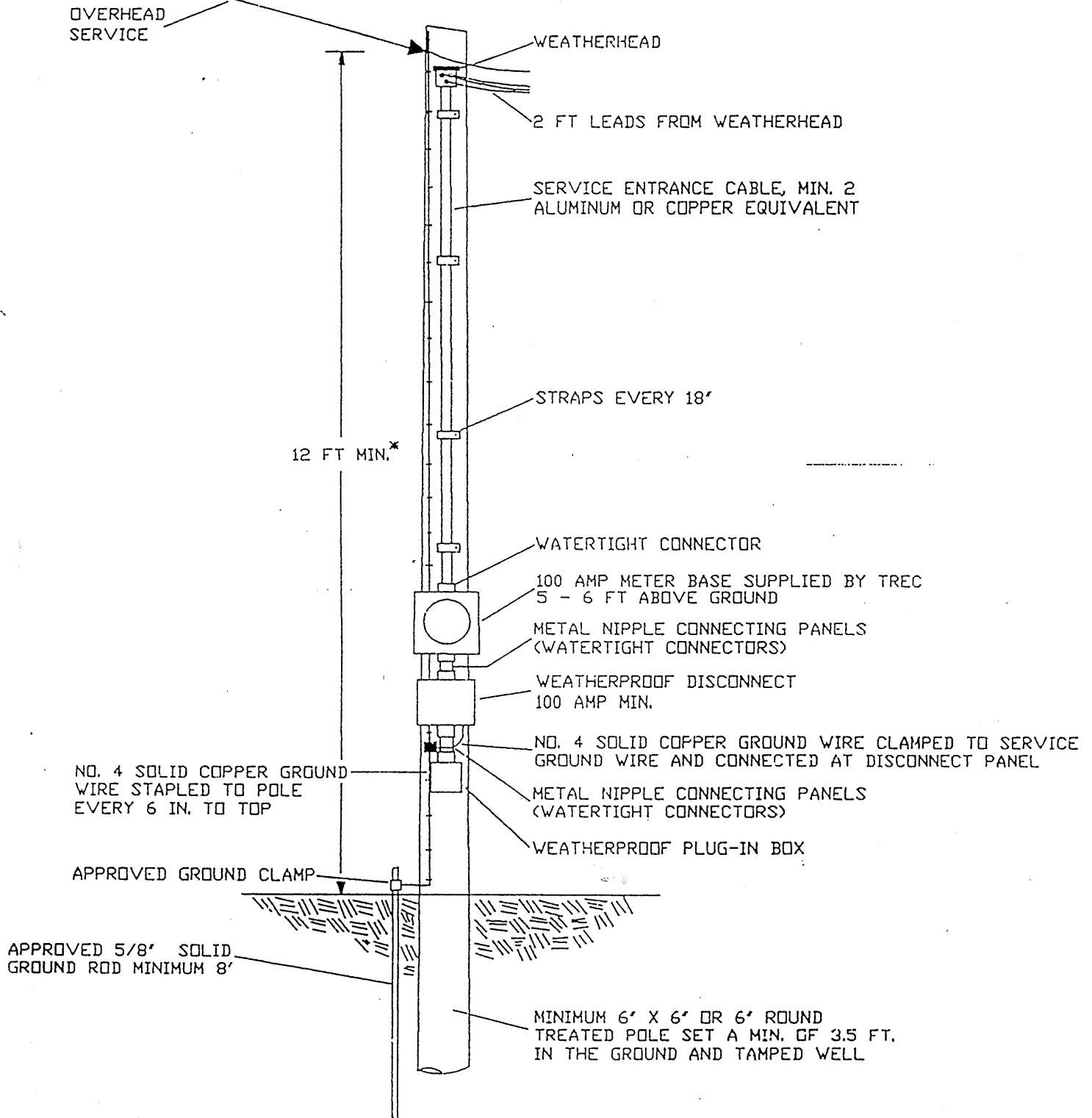
For all services 100 amp or less, risers and sweeps may only be reduced to 2.5" SCH-80, but meterbase must still be offset.

Member must always OPEN and CLOSE lateral ditch (min. 24" deep).

<p>TALLAPOOSA RIVER ELECTRIC CO-OP, INC. LAFAYETTE, ALABAMA PHONE # 1-800-332-8732</p>	
<p>METER PEDESTAL 200 AMP UNDERGROUND</p>	
DRAWN BY: KENNETH SMITH	DATE: 3 - 10 - 94
SCALE: NONE	SHEET 2 OF 2

THIS INSTALLATION MUST CONFORM TO THE NEC AND ANY APPLICABLE LOCAL CODES AND ORDINANCES. SEE LOCAL AUTHORITIES FOR ANY REQUIREMENTS BEYOND THESE LISTED.

THE POINT WHERE TREC ATTACHES MUST BE A MIN. OF 12 FT. ABOVE GROUND



NO. 4 SOLID COPPER GROUND WIRE STAPLED TO POLE EVERY 6 IN. TO TOP

APPROVED GROUND CLAMP

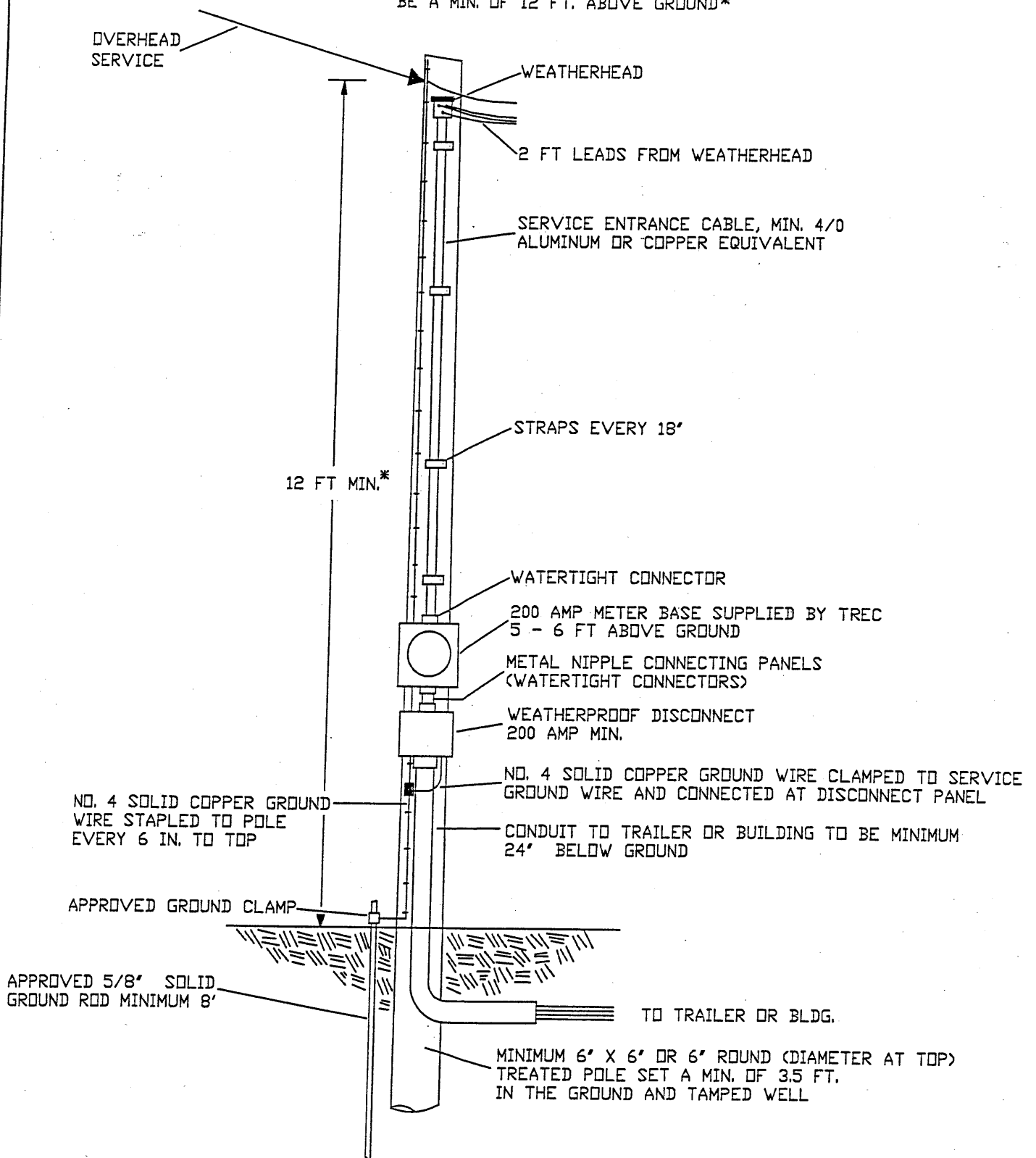
APPROVED 5/8" SOLID GROUND ROD MINIMUM 8'

* REQUIRED POLE HEIGHTS MAY VARY ACCORDING TO LOCATION. PLEASE CONTACT TREC BEFORE SETTING POLE FOR CORRECT HEIGHT AND POLE SITE.

TALLAPOOSA RIVER ELECTRIC CO-OP, INC.	
LAFAYETTE, ALABAMA	
PHONE # 1-800-332-8732	
100 AMP TEMPORARY METER POLE	
DRAWN BY: P. GOODMAN	DATE: 5 - 14 - 93
SCALE: NONE	SHEET 1 OF 1

THIS INSTALLATION MUST CONFORM TO THE NEC AND ANY APPLICABLE LOCAL CODES AND ORDINANCES. SEE LOCAL AUTHORITIES FOR ANY REQUIREMENTS BEYOND THESE LISTED.

THE POINT WHERE TREC ATTACHES MUST BE A MIN. OF 12 FT. ABOVE GROUND*

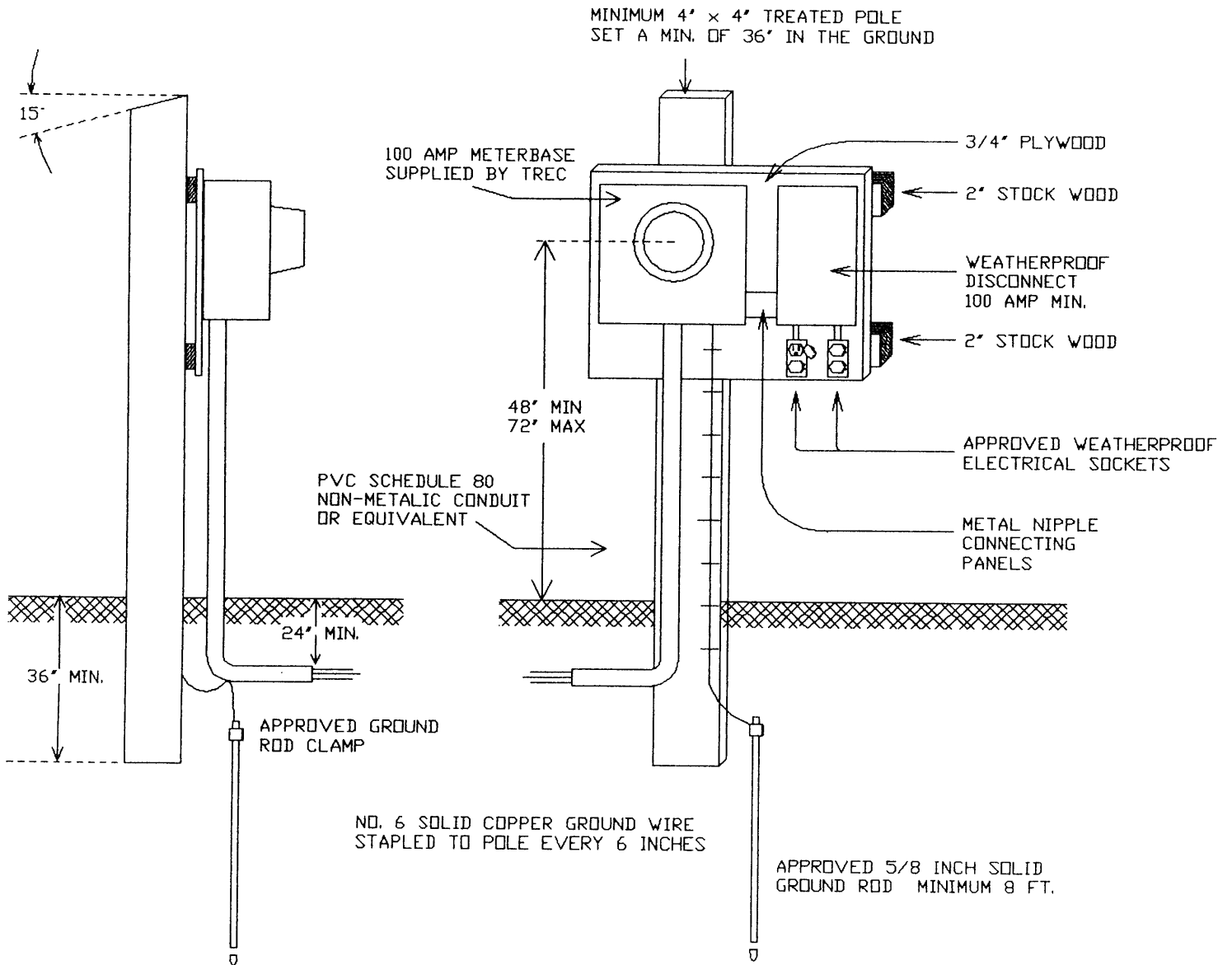


* REQUIRED POLE HEIGHTS MAY VARY ACCORDING TO LOCATION. PLEASE CONTACT TREC BEFORE SETTING POLE FOR CORRECT HEIGHT AND POLE SITE.

TALLAPOOSA RIVER ELECTRIC CO-OP, INC. LAFAYETTE, ALABAMA PHONE # 1-800-332-8732	
200 AMP PERMANENT METER POLE	
DRAWN BY: PDG	DATE: 5 - 14 - 93 REV: 3 - 23 - 06
SCALE: NONE	SHEET 1 OF 1

THIS INSTALLATION MUST CONFORM TO THE NEC AND ANY APPLICABLE LOCAL CODES AND ORDINANCES. SEE LOCAL AUTHORITIES FOR ANY REQUIREMENTS BEYOND THESE LISTED.

NOTE: NOTIFY TREC BEFORE LOCATING PEDESTAL. TREC MUST LOCATE ITS UNDERGROUND FACILITIES IN ORDER TO PROPERLY LOCATE THE PEDESTAL.



TALLAPOOSA RIVER ELECTRIC CO-OP, INC.

LAFAYETTE, ALABAMA

PHONE # 1-800-332-8732

TEMPORARY METER PEDESTAL
100 AMP UNDERGROUND

DRAWN BY: KEN HODGE

DATE: 7 - 18 - 95

SCALE: NONE

FILE: C:\ACAD\TEMPUNGR.DWG