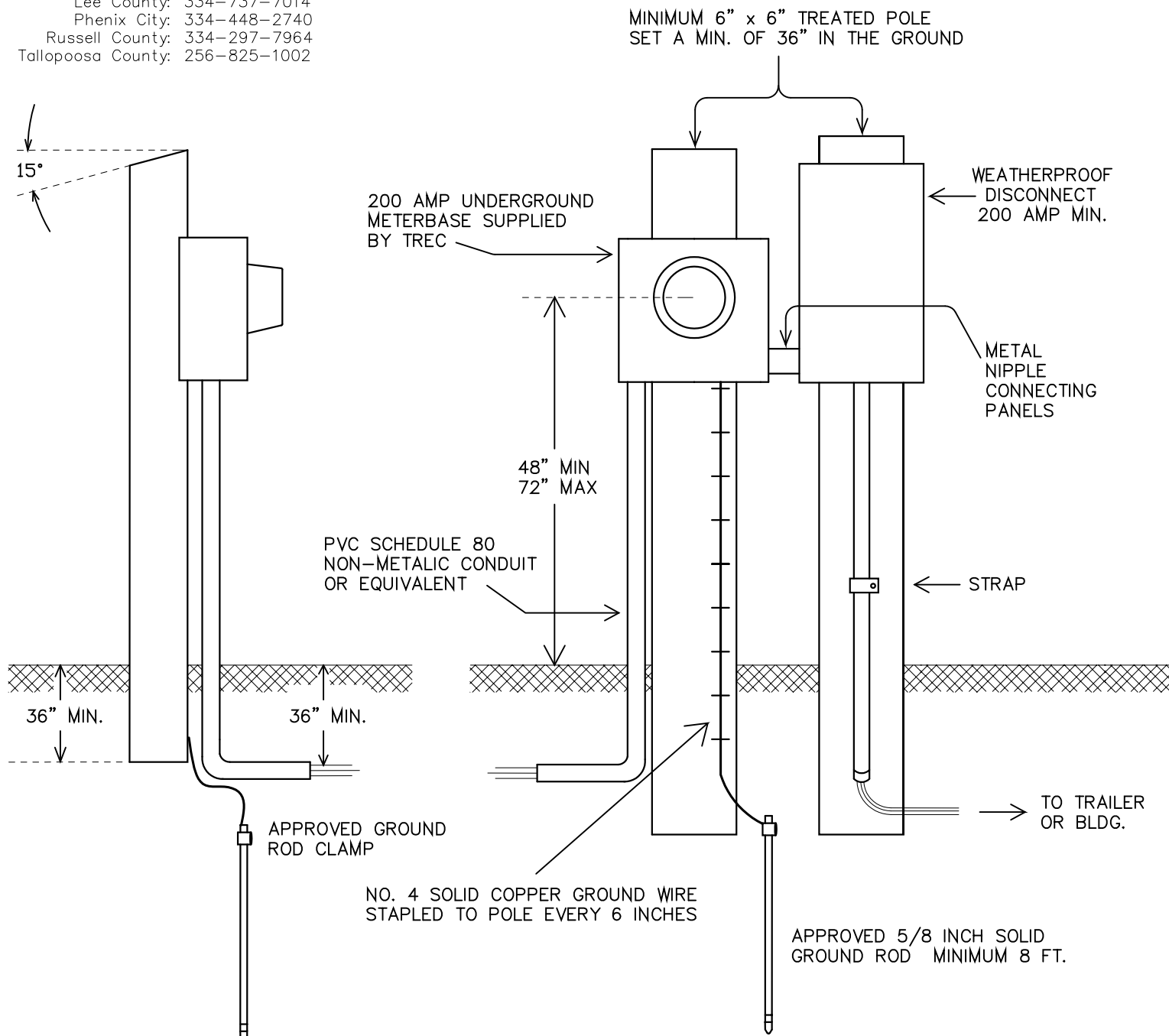


PERMANENT URD PEDESTAL SERVICE (TWO POLES)

THIS INSTALLATION MUST CONFORM TO THE NEC AND ANY APPLICABLE LOCAL CODES AND ORDINANCES. *SEE LOCAL AUTHORITIES FOR ANY REQUIREMENTS BEYOND THESE LISTED.

*LOCAL INSPECTORS:

- Auburn City Limits: 334-501-3170
- Opelika City Limits: 334-705-5420
- Lee County: 334-737-7014
- Phenix City: 334-448-2740
- Russell County: 334-297-7964
- Talapoosa County: 256-825-1002



This drawing shows one of many acceptable configurations for meterbase & disconnect configuration. Other alignments include: Meterbase above disconnect (offset for service riser conduit), Meterbase with disconnect on back side of pole, etc.

For all services 200 - 400 amp, 3" conduit must be used with approved meterbase.**
 ** Meterbase must accept 3" conduit nipple & must have meter lugs offset with extra space on one side to easily loop service entrance conductors around lugs to top side. Use of contractor-pack combo unit is discouraged. TREC reserve the right to refuse connection if entrance is not correct.

For all services 100 amp or less, risers and sweeps may only be reduced to 2.5" SCH-80, but meterbase must still be offset.

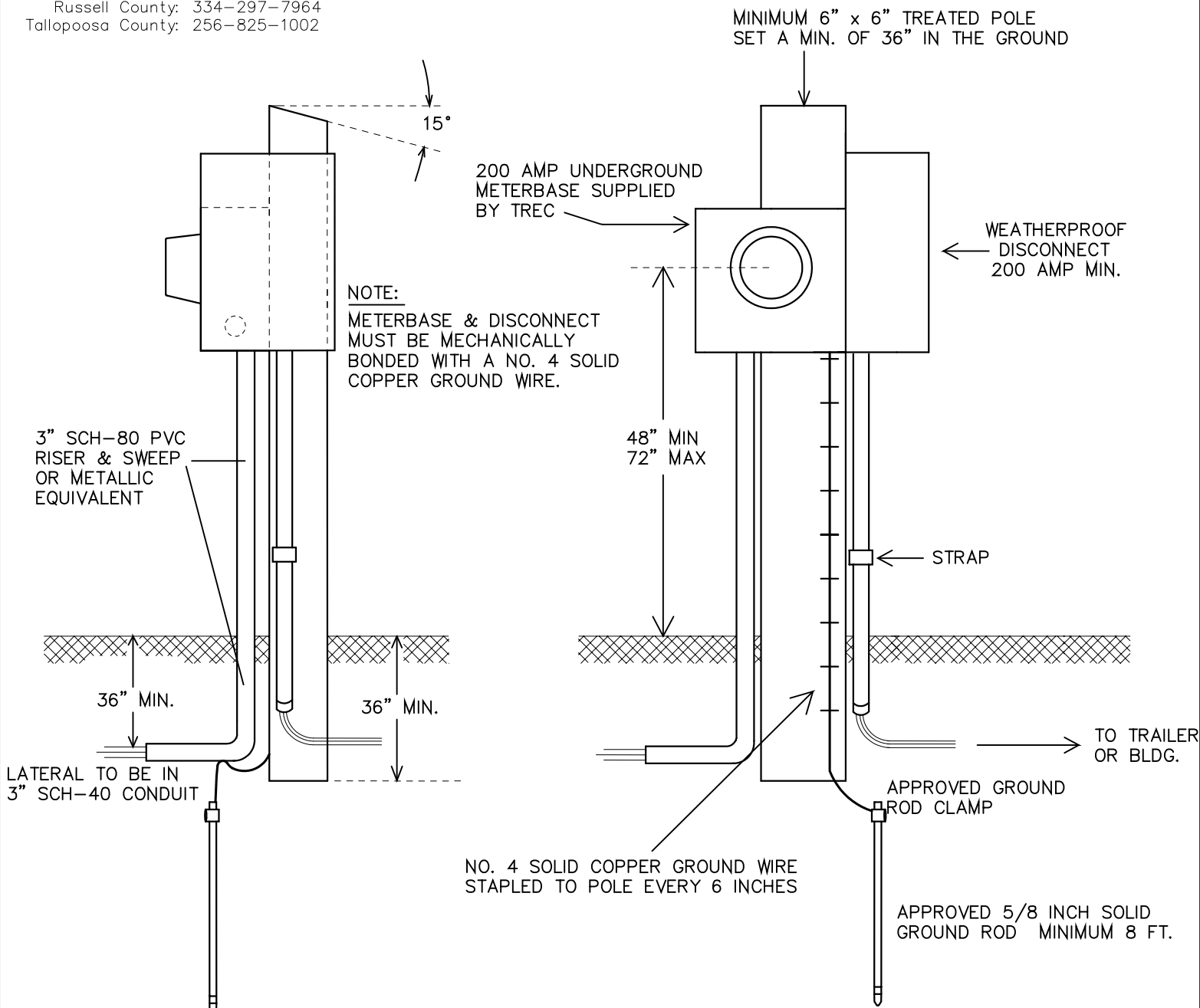
TALLAPOOSA RIVER ELECTRIC CO-OP, INC. LAFAYETTE, ALABAMA PHONE # 1-800-332-8732	
METER PEDESTAL 200 AMP UNDERGROUND	
DRAWN BY: KEN HODGE	DATE: 3 - 10 - 94
SCALE: NONE	SHEET 1 OF 2

PERMANENT URD PEDESTAL SERVICE (ONE POLE)

THIS INSTALLATION MUST CONFORM TO THE NEC AND ANY APPLICABLE LOCAL CODES AND ORDINANCES. *SEE LOCAL AUTHORITIES FOR ANY REQUIREMENTS BEYOND THESE LISTED.

*LOCAL INSPECTORS:

- Auburn City Limits: 334-501-3170
- Opelika City Limits: 334-705-5420
- Lee County: 334-737-7014
- Phenix City: 334-448-2740
- Russell County: 334-297-7964
- Talpoosa County: 256-825-1002



This drawing shows one of many acceptable configurations for meterbase & disconnect configuration. Other alignments include: Meterbase above disconnect (offset for service riser conduit), Meterbase with disconnect on back side of pole, etc.

For all services 200 - 400 amp, 3" conduit must be used with approved meterbase.**

** Meterbase must accept 3" conduit nipple & must have meter lugs offset with extra space on one side to easily loop service entrance conductors around lugs to top side. Use of contractor-pack combo unit is discouraged. TREC reserve the right to refuse connection if entrance is not correct.

For all services 100 amp or less, risers and sweeps may only be reduced to 2.5" SCH-80, but meterbase must still be offset.

TALLAPOOSA RIVER ELECTRIC CO-OP, INC.

LAFAYETTE, ALABAMA

PHONE # 1-800-332-8732

METER PEDESTAL
200 AMP UNDERGROUND

DRAWN BY: KEN HODGE

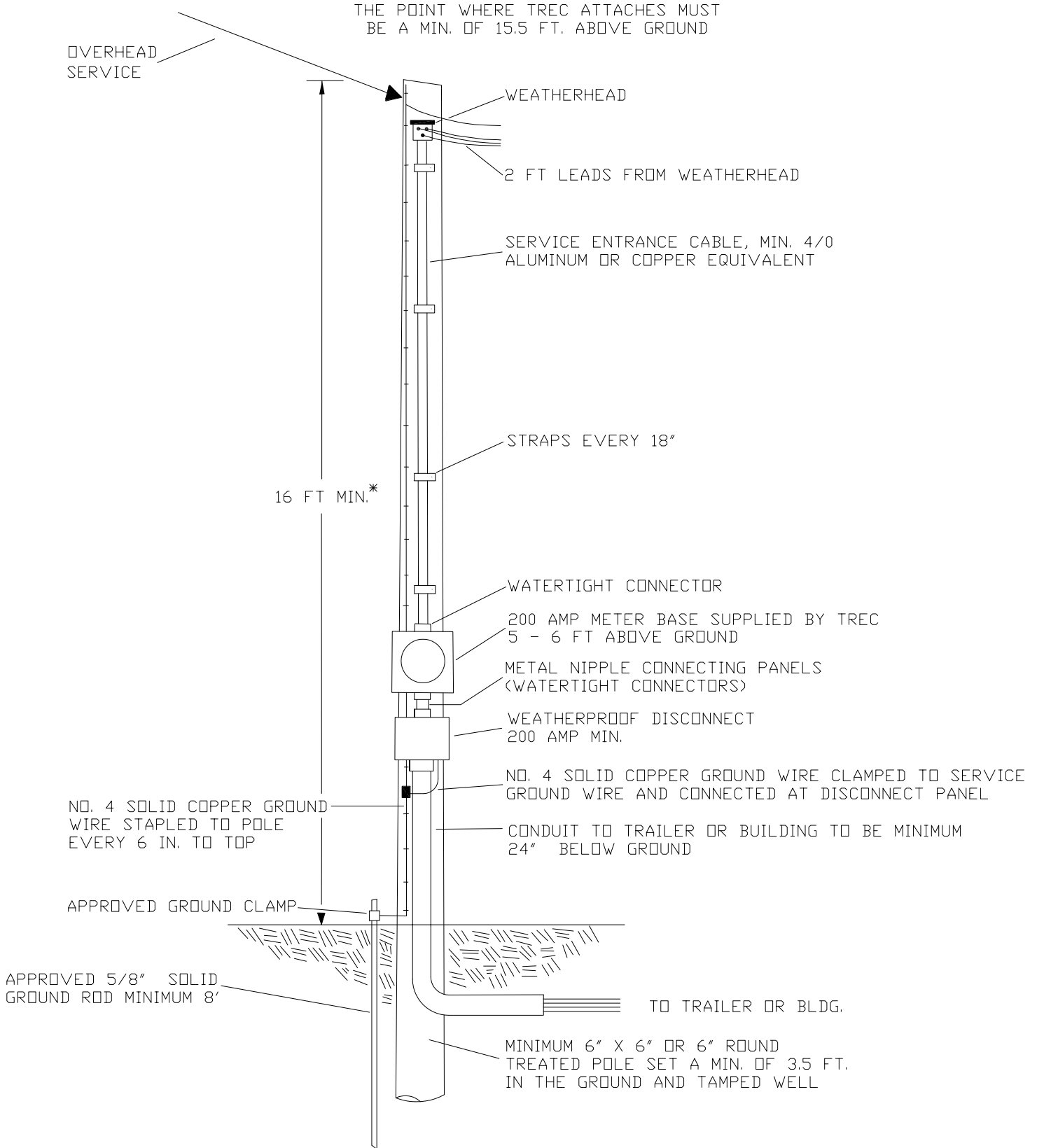
DATE: 3 - 10 - 94

SCALE: NONE

SHEET 2 OF 2

THIS INSTALLATION MUST CONFORM TO THE NEC AND ANY APPLICABLE LOCAL CODES AND ORDINANCES. SEE LOCAL AUTHORITIES FOR ANY REQUIREMENTS BEYOND THESE LISTED.

THE POINT WHERE TREC ATTACHES MUST BE A MIN. OF 15.5 FT. ABOVE GROUND



NO. 4 SOLID COPPER GROUND WIRE STAPLED TO POLE EVERY 6 IN. TO TOP

APPROVED GROUND CLAMP

APPROVED 5/8" SOLID GROUND ROD MINIMUM 8'

TALLAPOOSA RIVER ELECTRIC CO-OP, INC.	
LAFAYETTE, ALABAMA	
PHONE # 1-800-332-8732	
200 AMP PERMANENT METER POLE	
DRAWN BY: P. GOODMAN	DATE: 5 - 14 - 93
SCALE: NONE	SHEET 1 OF 1

* REQUIRED POLE HEIGHTS MAY VARY ACCORDING TO LOCATION. PLEASE CONTACT TREC BEFORE SETTING POLE FOR CORRECT HEIGHT AND POLE SITE.